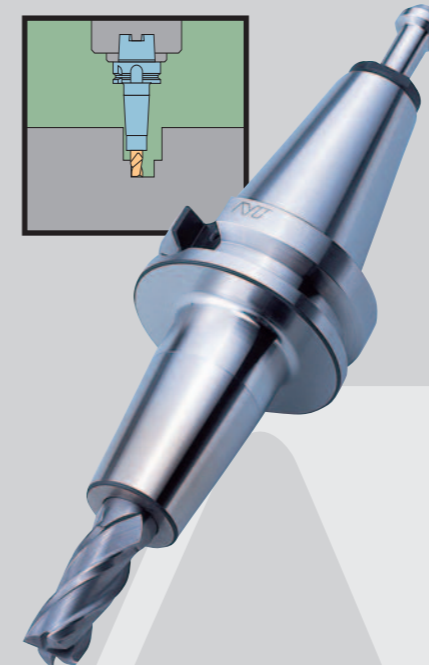


Modell/Model	d	L	L1	L2	D	D1	I	H	
SK40-	SRS 3A - 105	3	105	59	46	6	44,7	10	10-50
		135	135	89					
	SRS 4A - 105	4	105	59		7		12	15-50
		135	135	89					
	SRS 5A - 105	5	105	59		8		15	26-36
		135	135	89					
	SRS 6A - 105	6	105	59		9		26	26-50
			135	135					
	SRS 8A - 105	8	105	59		11		32	32-50
			135	135					
	SRS10A - 105	10	105	70		13		37	37-70
			135	135					
SRS12A - 105	12	105	70	15	37	37-70			
		135	135				100		
		165	130						

Modell/Model	d	L	L1	D	I	H
SRS 3A - 105	3	105	59	6	10	10-50
		135	89			
SRS 4A - 105	4	105	59	7	12	12-50
		135	89			
SRS 5A - 105	5	105	59	8	15	15-50
		135	89			
SRS 6A - 105	6	105	78	9	26	26-36
		135	108			
SRS 8A - 105	8	105	78	11	32	32-50
		135	108			
SRS10A - 105	10	105	78	13	37	37-70
		135	108			
SRS12A - 105	12	105	78	15	37	37-70
		135	108			
		165	138			

NT TOOL EUROPE
 Siemensstraße 17 A
 D 61449 Steinbach/Ts, Germany
 Fon: +49 (0)6171-91639-0
 Fax: +49 (0)6171-91639-90
 Mail: info@nttooleurope.com

Schrumpffutter SRK Shrink Fit Chuck SRK



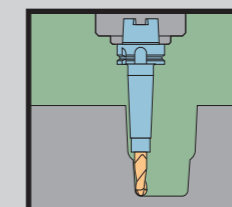
- verstärkte Bauform
- erhöhte Spannkraft
- optimal für die Schwerzerspannung



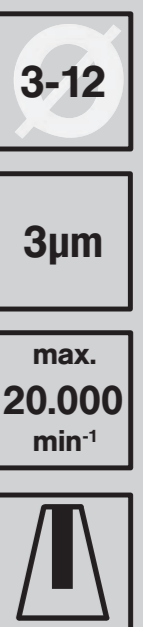
- heavy type
- enhanced clamping force
- perfect for heavy milling

Schrumpffutter SRS Shrink Fit Chuck SRS

- extra schlanke Bauform
- geringe Störkontur (3° Kegelwinkel)
- Bearbeitungen im Werkzeug- und Formenbau



- extra slim design
- less interference (3° taper angle)
- Die and Mould Making

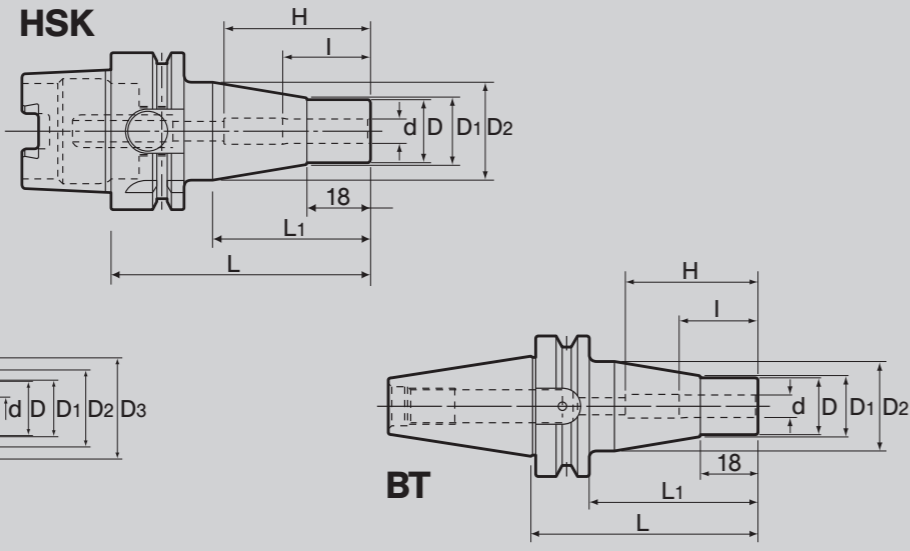




Schrumpffutter SRK / Shrink Fit Holder SRK

Modell/Model	d	L	L1	D	D1	D2	I	H	
HSK 63A-	SRK 6A- 80	6	80	54	16	17	30	26	26-36
	SRK 8A- 80	8			19	20	32		26-50
	SRK10A- 85	10	85	59	24	25	34	32	32-50
	SRK12A- 90	12	90	64	28	29		37	37-63
	SRK16A- 95	16	95	69	32	33		40	40-65
	SRK20A-100	20	100	74	36	37	42	42	42-72
HSK 100A-	SRK10A- 90	10	90	61	24	25	34	32	32-50
	SRK12A- 95	12	95	66	28	29		37	37-62
	SRK16A-100	16	100	71	32	33		40	40-65
	SRK20A-105	20	105	76	36	37	42	42	42-70
	SRK25A-115	25	115	86	46	47	53	48	48-80
	SRK32A-120	32	120	91	56	57	70	51	51-85

HSK-Schaft ohne Zugriffsbohrung für manuelle Spannung.
HSK shank without holes for manual clamping.



Modell/Model	d	L	L1	D	D1	D2	D3	I	H	
SK 40-	SRK 6A- 90	6	90	44	16	17	18	26	26-36	
	SRK 8A- 90	8			18	19	20		26-45	
	SRK10A- 90	10			24	25	34		32	24-50
	SRK12A- 90	12			28	29			37	37-70
	SRK16A- 90	16			32	33			40	40-80
	SRK20A- 90	20			36	37			46	42
SK 50-	SRK10A-105	10	105	62	24	25	34	70,1	32	32-50
	SRK12A-105	12			28	29			37	37-70
	SRK16A-105	16			32	33			40	40-80
	SRK20A-105	20	36	37	42	42	42-100			
	SRK25A-120	25	120	77	46	47	53	48	48-110	
	SRK32A-120	32			56	57	70	51	51-120	

Änderungen auf Grund technischer Weiterentwicklungen behalten wir uns vor.
We reserve the right to make modifications due to technical developments.

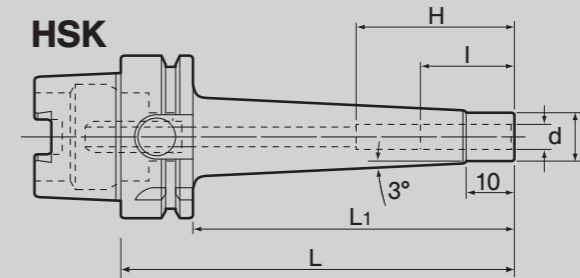


Schrumpffutter SRK / Shrink Fit Holder SRK

Modell/Model	d	L	L1	D	D1	D2	I	H		
BT 40-	SRK 6A- 90	6	90	63	16	17	30	26	26-36	
	SRK 8A- 90	8			19	20	32		26-50	
	SRK10A- 90	10			24	25	34		32	32-50
	SRK12A- 90	12			28	29			37	37-70
	SRK16A- 90	16			32	33			40	40-80
	SRK20A- 90	20			36	37	46		42	42-100
BT 50-	SRK10A-105	10	105	67	24	25	34	40	32	32-50
	SRK12A-105	12			28	29			37	37-70
	SRK16A-105	16			32	33			40	40-80
	SRK20A-105	20	36	37	46	42	42-100			
	SRK25A-120	25	120	82	46	47	53	48	48-110	
	SRK32A-120	32			56	57	70	51	51-120	



Schrumpffutter SRS / Shrink Fit Holder SRS



Modell/Model	d	L	L1	D	I	H
SRS 3A -	135	3	135	6	10	10-50
	165		165			
SRS 4A -	135	4	135	7	12	12-50
	165		165			
SRS 5A -	135	5	135	8	15	15-50
	165		165			
HSK 63A-	SRS 6A -	6	105	9	26	26-36
			135			
	SRS 8A -	8	105	11	26-50	
			135			135
SRS10A -	10	105	13	32	32-50	
		135				135
	SRS12A -	12	105	15	37	37-70
			135			

HSK-Schaft ohne Zugriffsbohrung für manuelle Spannung.
HSK shank without holes for manual clamping.



Ø 3, 4 : Schafttoleranz h4
Ø 5 : Schafttoleranz h5
ab Ø 6 : Schafttoleranz h6
Ø 3, 4 : shank allowance h4
Ø 5 : shank allowance h5
from Ø 6 : shank allowance h6